

FUSE TERMINAL BLOCKS



CF4U

FUSE TERMINAL BLOCKS (ENCLOSED)
SCREW CLAMP

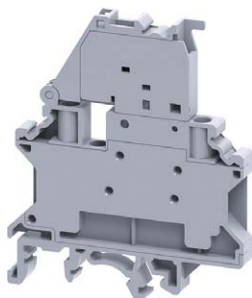
4mm²

Description	Part No.
Conductor cross section stranded, 0.2 - 4mm ²	CF4U
Dimensions (L x W x H), 57 x 8 x 50.3mm	
Colour "grey", 800V/6.3A	
Connection: 5 x 20 & 5 x 25mm fuse link. No endplate required.	

ACCESSORIES

Marking tag: K8 size	
End clamp:	CA702
Comb Insulated shorting link:	CA711/**

** Specify 2, 3, 4 or 10 way at time of order.



CF4SP

Description	Part No.
Conductor cross section stranded, 0.2 - 4.0mm ²	CF4SP
Dimensions (L x W x H), 58.5 x 6 x 70mm	
Colour "grey", 1000V/10A	
Connection: 5 x 20mm & 5 x 25mm fuse link. No endplate required.	

ACCESSORIES

Marking tag: K6 size	
End clamp:	CA702
Non-insulated shorting link:	CA722/*
Insulated shorting link:	CA742/*
Comb insulated shorting link:	CA714/**

* Specify 2, 3, 4, 10 or 100 way at time of order.

** Specify 2, 3, 4 or 10 way at time of order.



CA702



CA722/*



CA742/*



CA711/**
CA714/**

FUSE TERMINAL BLOCKS



CF4UL

FUSE TERMINAL BLOCKS (ENCLOSED)
SCREW CLAMP

4mm²

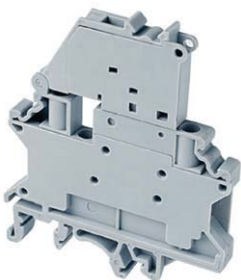
Description	Part No.
Conductor cross section stranded, 0.2 - 4.0mm ²	CF4UL ²
Dimensions (L x W x H), 57 x 8 x 50.3mm	
Colour "grey", 800V/6.3A	
Connection: 5 x 20 and 5 x 25mm fuse link with LED.	
No endplate required.	

ACCESSORIES

Marking tag: K6 size	
Comb insulated shorting link:	CA711/**
End clamp:	CA702
High end clamp:	CA802

² LED voltage needs to be specified at time of order (2 versions available), 6 - 60V or 110 - 240V for AC/DC at time of order.

** Specify 2, 3, 4, or 10 way at time of order.



CF4SPL

Description	Part No.
Conductor cross section stranded, 0.2 - 4.0mm ²	CF4SPL ²
Dimensions (L x W x H), 58.5 x 6 x 70mm	
Colour "grey", 1000V/10A	
Connection: 5 x 20mm and 5 x 25mm fuse link with LED.	
No endplate required.	

ACCESSORIES

Marking tag: K6 size	
End clamp:	CA702
High end clamp:	CA802
Non-insulated shorting link:	CA722/*
Insulated shorting link:	CA742/*
Comb insulated shorting link:	CA714/**

² LED voltage needs to be specified at time of order (2 versions available), 6 - 60V or 110 - 240V for AC/DC at time of order.

* Specify 2, 3, 4, 10 or 100 way at time of order.

** Specify 2, 3, 4 or 10 way at time of order.

CA702	CA802	CA722/*	CA742/*	CA711/* CA714/**
-------	-------	---------	---------	---------------------

FUSE TERMINAL BLOCKS



DDFL4U

DOUBLE LEVEL FUSE TERMINAL BLOCK
SCREW CLAMP

4mm²

Description	Part No.
Conductor cross section stranded, 0.25 - 4mm ²	DDFL4U
Dimensions (L x W x H), 88 x 8 x 67.4 mm	
Colour "grey"	
800V/6.3A (top level), 800V/32A (bottom level)	
Connection: 5 x 20 & 5 x 25mm fuse link terminal. Top level fuse terminal, feed through bottom level.	

ACCESSORIES

Marking tag: K2 size (on fuse carrier)	
Marking tag: K8 size (on terminal)	
Endplate:	EPDDFL4U
End clamp:	CA702
	CA202
Non-insulated shorting link:	CA729/**
Insulated shorting link:	CA749/**
Comb Insulated shorting link:	CA711/**

**Specify 2, 3, 4 or 10 way at time of order.

					
EPDDFL4U	CA702	CA202	CA729/**	CA749/**	CA711/**

FUSES - GLASS 5 X 20 M205 FAST ACTING

Current Rating	Part No.
100mA	AGDB100MA
500mA	AGDB500MA
630mA	AGDB630MA
1A	AGDB1
2A	AGDB2
3.15A	AGDB3.15
4A	AGDB4
5A	AGDB5
6.3A	AGDB6.3



AGDB100MA

